



Wyndham Crescent, Broomhill

£300,000

- Energy Rating - C
- 21ft x 13ft Living / Dining Room
- Family Bathroom
- Driveway Providing Off Street Parking

- Four Bedroom Terraced Family Home
- Fitted kitchen
- Large Rear Garden
- Gas Central Heating & Upvc Double Glazing

Occupying a convenient position on Wyndham Crescent in the ever popular Broomhill area, this spacious four bedroom terraced home offers generous accommodation, excellent outdoor space and easy access to local amenities and transport links, making it an ideal choice for growing families.

The property is well proportioned throughout, with the standout feature being the impressive 21ft x 13ft living and dining room. Bright and versatile, this substantial space provides plenty of room for both relaxing and entertaining, creating a natural hub for day to day life. The fitted kitchen is practical and well arranged, offering ample storage and workspace.

Upstairs, there are four bedrooms and a family bathroom, providing flexible accommodation to suit a variety of household needs.

Outside, the rear garden is a particularly attractive feature. Larger than many found with similar properties, it is laid mainly to lawn with a patio area ideal for outdoor dining, children's play or simply enjoying the warmer months. To the front, a driveway provides valuable off street parking.

Further benefits include gas central heating and UPVC double glazing throughout.

Location is another key strength. Wyndham Crescent is well placed for access to local shops, schools and everyday amenities, while regular bus routes nearby provide convenient links into Bristol city centre and surrounding areas.

A spacious and well located home offering plenty of potential and excellent value for those seeking room to grow.

Living / Dining Room 21'10" max x 13'10" ma (6.66 max x 4.23 ma)

Kitchen 9'11" max x 8'4" max (3.03 max x 2.55 max)

Bedroom One 13'8" max x 10'2" max (4.19 max x 3.11 max)

Bedroom Two 11'6" max x 11'1" max (3.52 max x 3.39 max)

Bedroom Three 11'6" max x 6'5" max (3.53 max x 1.96 max)

Bedroom Four 10'11" max x 6'2" (3.35 max x 1.89)

Bathroom 10'11" x 6'2" (3.35 x 1.89)

Tenure Status - Freehold

Council Tax - Band A



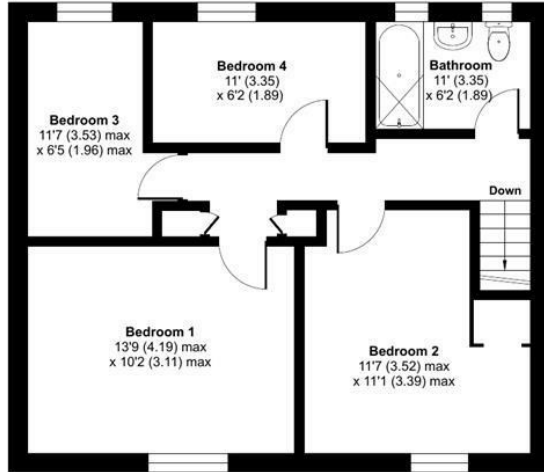




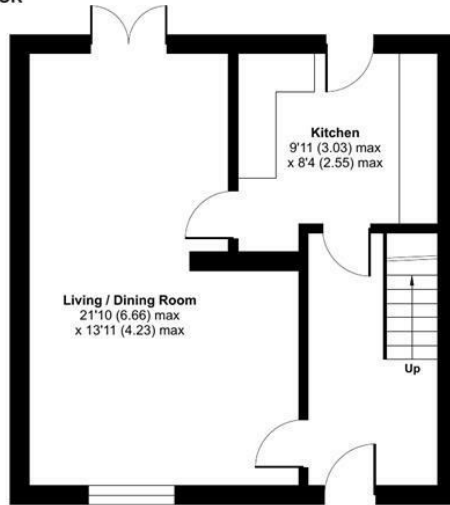


Wyndham Crescent, Bristol, BS4

Approximate Area = 1044 sq ft / 96.9 sq m
For identification only - Not to scale



FIRST FLOOR



GROUND FLOOR

